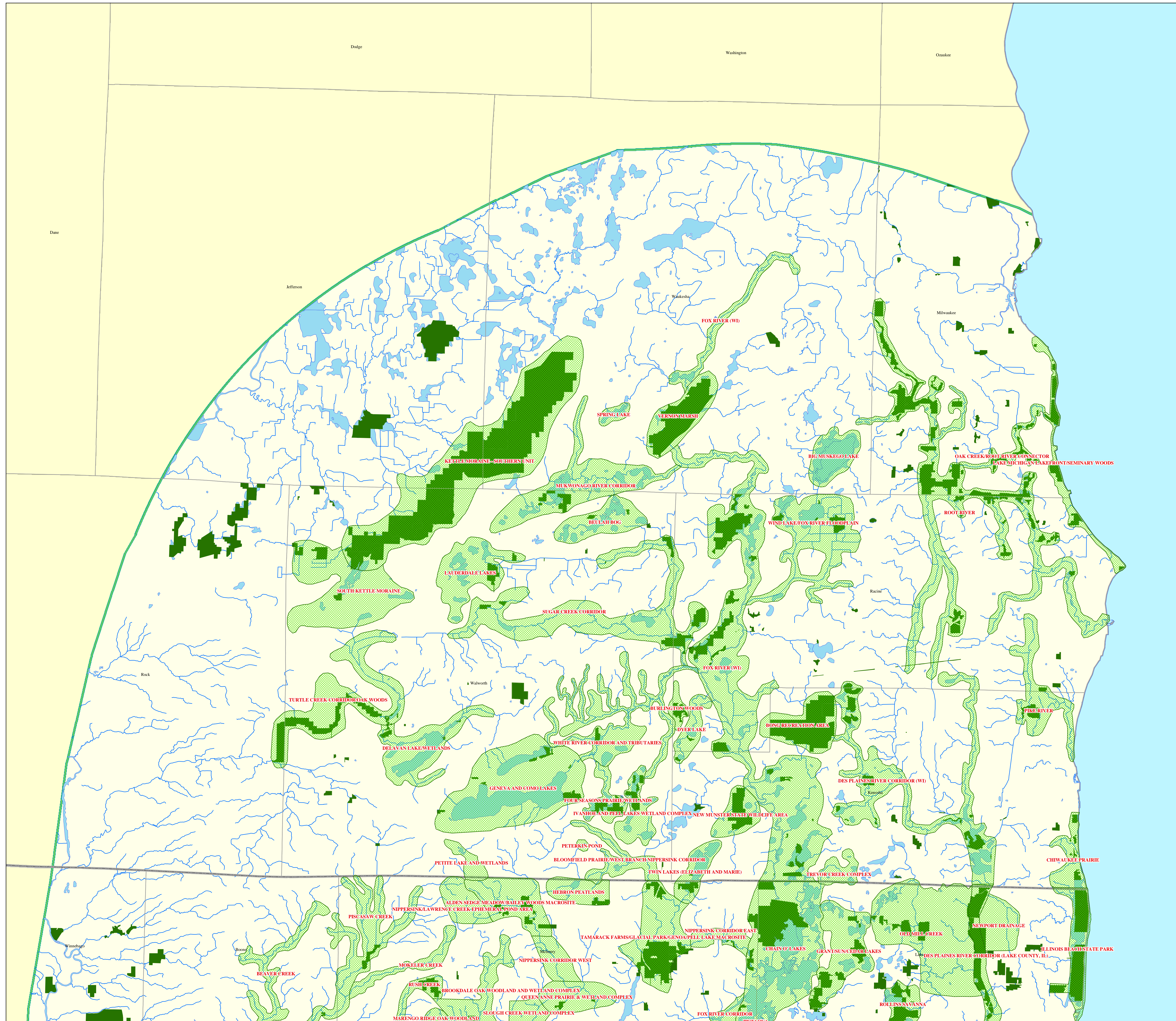
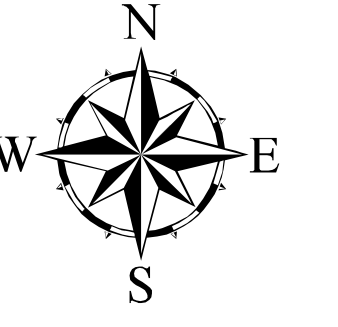


Chicago Wilderness Green Infrastructure Vision Southeastern Wisconsin



Recommended Resource Protection Areas

Existing Public Open Space

County Boundaries

State Boundaries

Streams and Rivers

Lake Michigan

Open Water

DATA SOURCES:

Existing Public Open Space in Wisconsin: Conservation Easements from U.S. Fish and Wildlife Service's 1995 Wetland Management District Conservation Easements - Region 3 Map, April 2001; Kettle Moraine State Forest - Southern Unit from Wisconsin Department of Natural Resources; Manged Areas from U.S. Environmental Protection Agency, Region 5's 2001-2002 Rock River Managed Areas, Inland Sensitivity Atlas, Version 1, September 2002; Public Lands for Walworth County from Southeastern Wisconsin Regional Planning Commission's 1990 Public Lands, Walworth County

Existing Public Open Space in Illinois: Cook County Forest Preserves from Forest Preserve District of Cook County's Forest Preserve District Boundaries, April 2001; DuPage County Forest Preserves from Forest Preserve District of DuPage County's 2003 Forest Preserve District Boundaries, February 2003; Lake County Forest Preserves from Lake County Forest Preserve District, 2003; McHenry County Forest Preserves from McHenry County Conservation District, digitized by NIPCC staff from McHenry County Highway Map, September 2002; Kane County Forest Preserves from Kane County Forest Preserve District Boundaries, May 2002; Will County Forest Preserves from Forest Preserve District of Will County's 2003 PNS, 2003/1/20, November 2003; Midwestern National Tallgrass Prairie from Midwestern Prairie Explorer 1999 CD-ROM with additional edits reflecting changes between CD release date and April 2001; Illinois State Parks and Illinois State Conservation Areas from Illinois Department of Natural Resources, Illinois Geographic Information System CD-ROM, Volume II, May 1996

County Boundaries, State Boundaries and Lake Michigan: ESRI's 2000 Data & Maps Media Kit CD-ROM, CD3, 2001

Streams and Open Water: U.S. Geological Survey's National Hydrography Dataset

